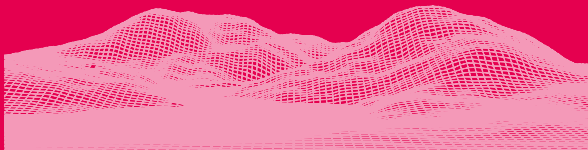


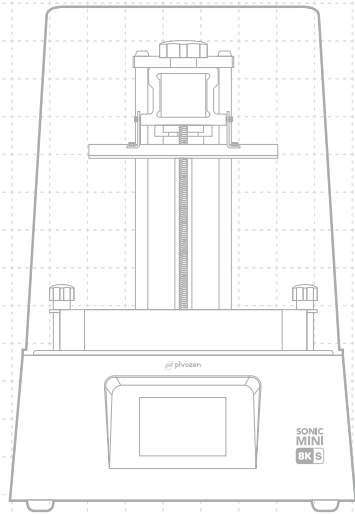


SONIC
MINI
8K S



Dear User,

Thank you for joining us. Please read the Sonic Mini 8K S manual thoroughly and follow the instructions step by step to get the best printing experience.



01 Introduction

Printer Parts

PART.1
Building Plate

PART.2
Resin Vat

PART.3
LCD Screen

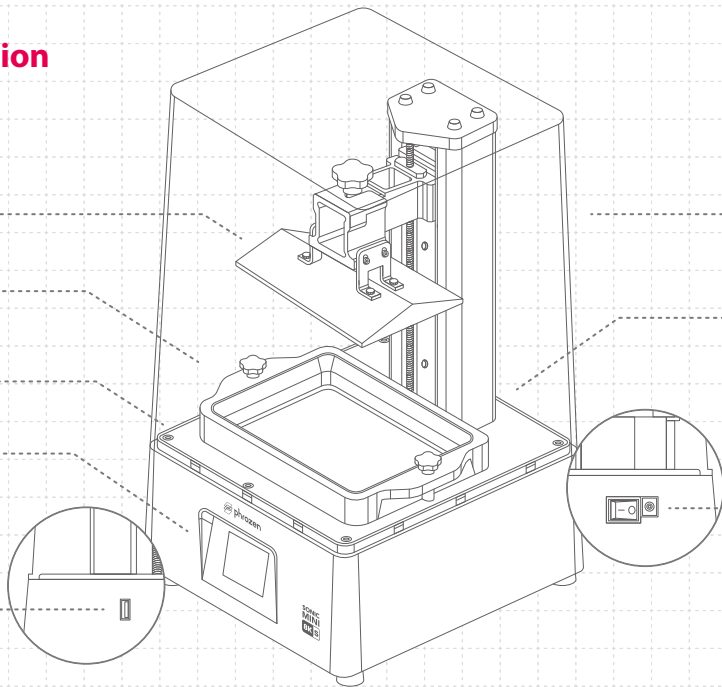
PART.4
Touch Panel

PART.5
USB Port

PART.6
Plastic Case

PART.7
Z-axis

PART.8
Power Switch
Power Socket



The Toolbox



After Sales Service Card



Gloves



Power Adapter



Plastic Funnel



Scrapers



Allen Wrench



USB

Operation

| | |
|-----------------|------------------------|
| System | Phrozen OS |
| Operation | 3.5 inch Touch Panel |
| Slicer Software | Tango Slicer or Others |
| Connectivity | Side USB Port |

Printing Specifications

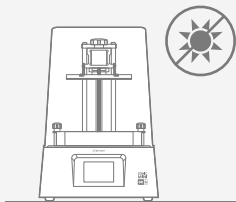
| | |
|--------------------|------------------------------|
| Technology | Resin 3D Printer - LCD Type |
| Light Source | Linear Projection LED Module |
| XY Resolution | 22 μ m |
| Layer Thickness | 0.01-0.30 mm |
| Max Printing Speed | 80 mm / hr |
| Power Requirement | 24VDC ; 2A |
| Power | Max 48W |

Hardware Specifications

| | |
|-----------------|--------------------|
| Printer Size | 29 x 29 x 43 cm |
| Printing Volume | 16.5 x 7.2 x 17 cm |
| Printer Weight | 10 kg |

* All specifications have been tested in a laboratory. Please note that certain specifications may be subject to change without prior notice.

02 Key Notes Before Start



Stable Printing Environment

Store your 3D printer in a dry and ventilated environment. Avoid exposure to direct sunlight. Make sure to place the printer on a flat surface.



Protective Measures

While printing and using resin, please make sure to wear gloves, masks, protective goggles, and long-sleeved clothing.

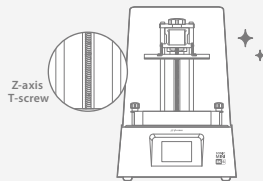
Maintenance

Clean the Z-axis

First, dry clean the Z-axis T-screw. Then apply a thin layer of general lubricant on it, so that it whirls smoothly.

Clean the 3D Printer

Use sanitizing alcohol and tissue paper to carefully clean the printer, the resin vat, and the building plate.



03 Prepare Your 3D Printer

For first-time use, please thoroughly follow the steps down below to calibrate your Z-axis and conduct the LCD Test so that your 3D printer is ready.

LCD Test

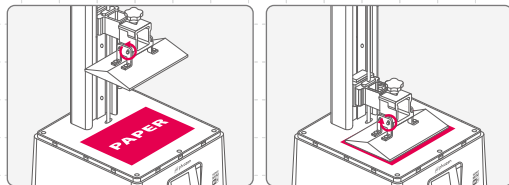
- 1 Click on TOOLS. Then click on LCD TEST.
- 2 Check to see if the LCD screen displays the same image as seen on the touch panel.
- 3 When the LCD screen clearly displays the image, the LCD TEST is complete.



*Please refer to the actual printer operation based on the touchscreen display.

Z-axis Calibration

- 1 Click on TOOLS. Then click on Z CALIB.
- 2 Remove the resin vat and place an A4 paper on the LCD. Loosen all 4 screws on the sides of the building plate.
- 3 Click on NEXT, and wait until the building plate touches the LCD screen.
- 4 Then tighten the 4 screws. Make sure paper is unmovable, then click on DONE to finish calibration.
- 5 Wait until the building plate retracts to the TOP. Z-axis Calibration is now complete.



04 Perform the Printing Test

After conducting the Z-axis Calibration and LCD TEST, let's move on to the Printing Test.

Prepare Your PRZ File

The Sonic Mini 8K S only supports PRZ file format.

Use slicer software to turn STL and OBJ files into PRZ files.

Convert STL/OBJ File to PRZ File

- 1 Import STL or OBJ files into the slicer software. Choose "Sonic Mini 8K S" printer and set the resin parameters according to the resin used, and start slicing.
- 2 After the slicing is completed, save it as a PRZ file and your 3D model file is ready to be printed.

Test Files for Your First Print

- 1 The USB included in the tool box contains both STL and PRZ files of two test models: "Phrozen_test" and "Phrozen_XP_Finder".
- 2 You can directly print the PRZ files in the USB with Aqua-Gray 8K Resin. If you are printing with other resins, slice the STL files with the compatible parameter settings required for your resin.



Download Slicer



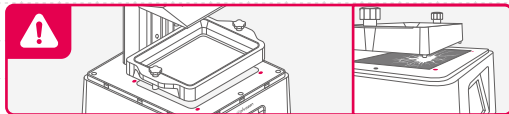
Resin Parameters



Learn & Download
Phrozen_XP_Finder.

Printing Test

- 1 Please make sure the bottom screws of the resin vat are perfectly aligned with the platform grooves, then tighten the screws on both sides. When placing the resin vat, please pay attention to the bottom screws and **DO NOT** damage the LCD screen.
- 2 Shake the resin bottle for 1 minute. When pouring, make sure the resin does not exceed the max fill line on the resin vat.
- 3 Insert your USB into Sonic Mini 8K S. Choose the file and click GO to begin printing.
- 4 Keep the plastic case closed during printing to prevent exposure to excessive UV light.
- 5 After printing, carefully remove the building plate and then tilt and place it onto a desk or a flat surface. Use a metal scraper to carefully remove your print.



Use Z-Offset to Set your Z-Axis Zero Position

After calibrating the Z-axis, you can use this function to modify your Z-axis zero position, if needed. Use this function if you are looking to print flat on the building plate or if the resin flow is slow.

Click the following buttons on the touchscreen:

TOOLS > Z CONTROL > START > 0.1mm up > Z-Offset > SET

Tips: If you use Z CALIB, or reset the Z-Offset, or flash the firmware, the device will be reset to Z-Axis Zero Position.



After-sales service & warranty

- Phrozen offers a one-year warranty for all parts, excluding consumable components such as the LCD screen and FEP film.
- Sonic Mini 8K S LCD screen is covered under a 3-month warranty. Please note that this warranty does not cover any damages caused by human factors.
- If you encounter any difficulties, please scan the QR codes down below to contact us.

Contact us!



Congratulations!

You have just completed your first run.
We hope you've had a great experience!

Please follow Phrozen's social media accounts
and subscribe to our YouTube channel to learn
more about printing tips and share information
with the community.



**Facebook
Page**



**Facebook
User Group**



YouTube



Instagram