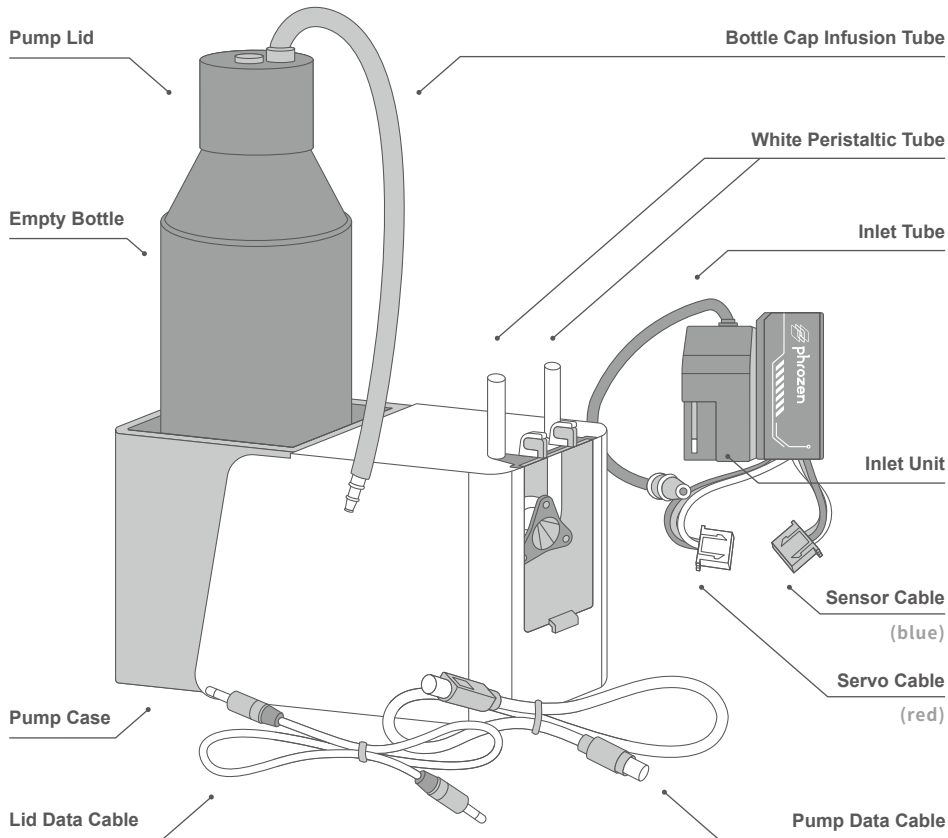
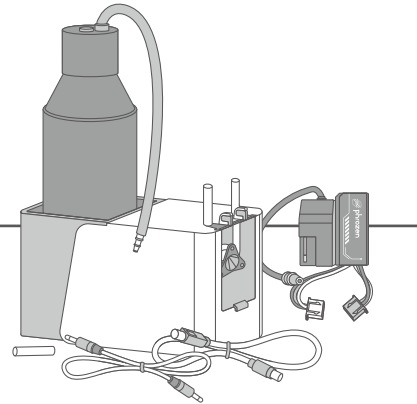
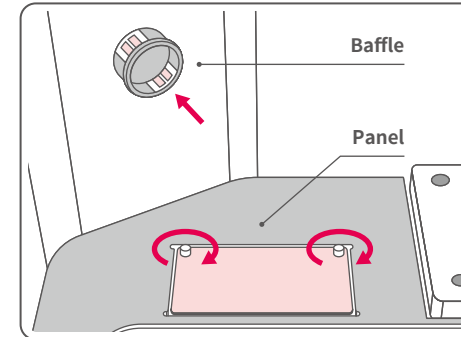


# Pump & Fill - Automated Resin Feeder User Guide



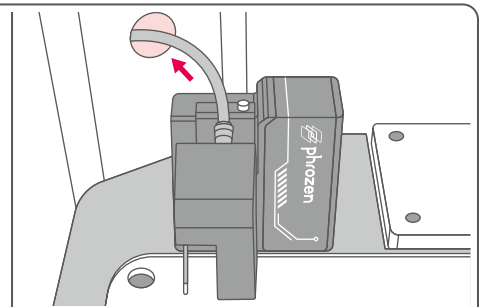
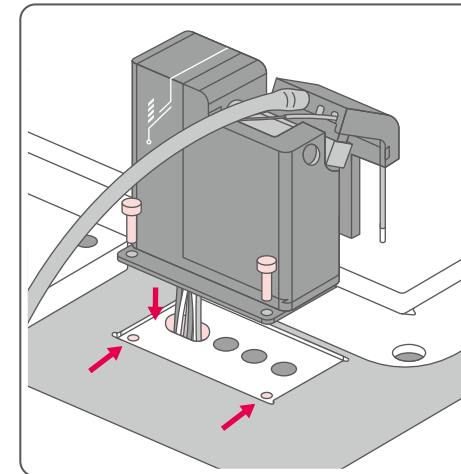
\*Currently, the Pump & Fill is only applicable for Sonic Mega 8K S.

## 01 Install the Inlet Unit

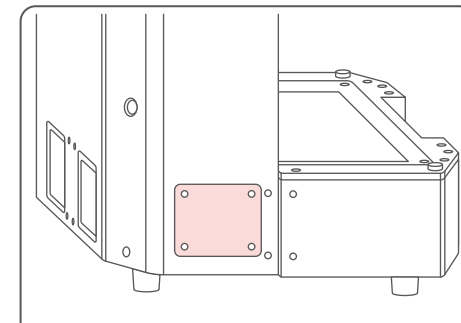


**1** Remove the baffle on the side of the printer and use an allen wrench (2.5 mm) to remove the panel\* from the surface of the printer.

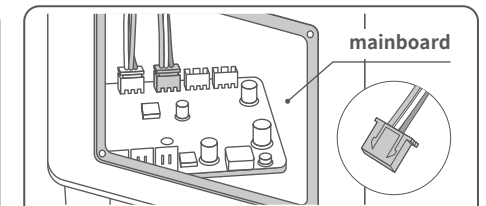
\* Please ensure that you store the panel in a secure and safe space. If the Pump & Fill unit are removed, the panel needs to be installed back to the machine.



**2** Pass the servo cable and sensor cable through the hole located below the panel and use the screws that were removed in **STEP 1** to tighten and place the inlet unit to the printer. Then pass the inlet tube through the hole located on the side of the printer.



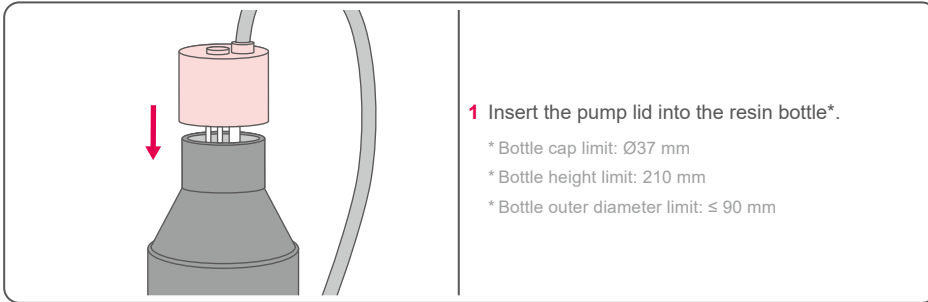
**3** Use an allen wrench (2mm) to remove the side cover outside the printer.



**4** Connect the servo cable and sensor cable\*\* to the printer's mainboard. Make sure to connect both cables to their respective color-coded slots, and then put the side cover removed in **STEP 3** back to its original position.

\*\* When connecting both the cables, please put the extended end of the wire head inwards and carefully insert it into the motherboard.

## 02 Install the Pump Unit

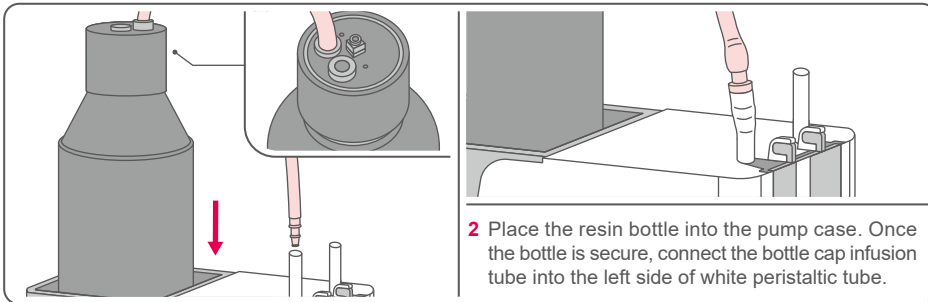


1 Insert the pump lid into the resin bottle\*.

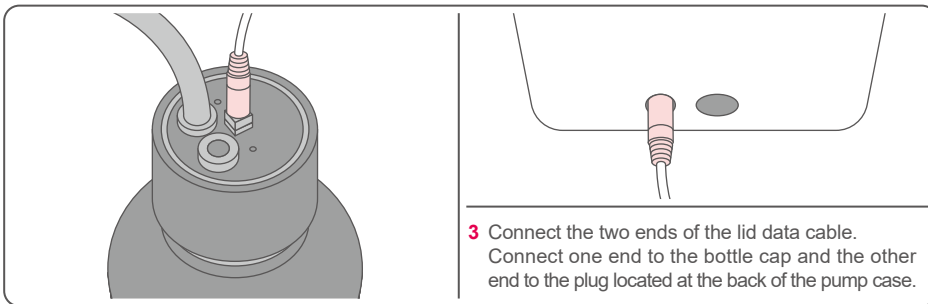
\* Bottle cap limit: Ø37 mm

\* Bottle height limit: 210 mm

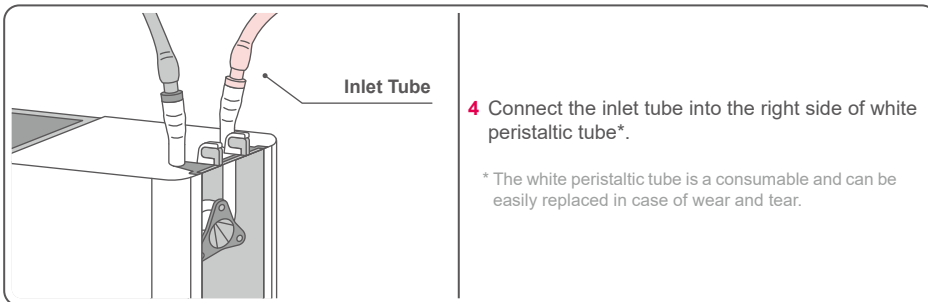
\* Bottle outer diameter limit: ≤ 90 mm



2 Place the resin bottle into the pump case. Once the bottle is secure, connect the bottle cap infusion tube into the left side of white peristaltic tube.

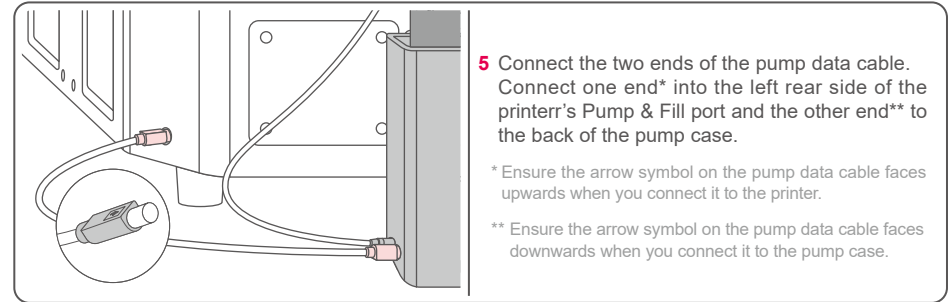


3 Connect the two ends of the lid data cable. Connect one end to the bottle cap and the other end to the plug located at the back of the pump case.



4 Connect the inlet tube into the right side of white peristaltic tube\*.

\* The white peristaltic tube is a consumable and can be easily replaced in case of wear and tear.



5 Connect the two ends of the pump data cable. Connect one end\* into the left rear side of the printer's Pump & Fill port and the other end\*\* to the back of the pump case.

\* Ensure the arrow symbol on the pump data cable faces upwards when you connect it to the printer.

\*\* Ensure the arrow symbol on the pump data cable faces downwards when you connect it to the pump case.

## 03 Machine Settings

**TO ACTIVE THE PUMP & FILL FUNCTION**

Click on the **TOOLS** button and select **RESIN AUTO FILL/PUMP** function. You will then be presented with three options:

- Auto-Fill** allows the printer to automatically fill the resin.
- Auto-Pump** allows the printer to automatically pump the resin back to the bottle.
- You can also start the pumping process instantly by clicking the **Immediate Resin pump** button.

\* Currently, the Pump & Fill is only applicable for Sonic Mega 8K S.

### ⚠ PRECAUTIONS

- When the "Auto-Fill Resin" function is turned on, the printer will first fill the resin until the liquid level reaches 7~9mm before it starts printing. Failure to reach this liquid level, a warning will pop up on your printer's touch screen, indicating that the printing process cannot be performed.
- When the liquid level is lower than 7~9mm, the device will automatically start to fill back the resin.
- When the "Auto Pump" function is turned on, the resin will be automatically pumped back into the resin bottle for a duration of 10 minutes following the completion of the print job.
- The automatic resin pump will extract most of the resin, but we still recommend you clean the resin vat.



Facebook



Facebook Group



YouTube



Instagram